



**SEC** *Heat Exchangers*

**TECHNICAL CATALOGUE**

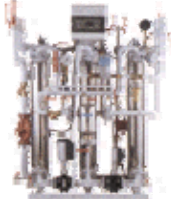
**Section 11**

**Energy Stations**

## **Table of Contents**

<b>TABLE OF CONTENTS</b> .....	<b>2</b>
<b>SECTION 11</b> .....	
<b>ENERGY STATIONS</b> .....	<b>3</b>
<b>PRINT AND FAX QUOTE FORM</b> .....	<b>4</b>
<b>Contact Information</b> .....	<b>5</b>

## **SEC Energy Stations**



### **SEC Energy Stations**

- custom arrays of heat transfer equipment, skid mounted
- simplifies on site installation

In response to the global demand for more sophisticated heat transfer systems, SEC custom designs quality Energy Transfer Stations.

SEC Energy Transfer Stations are an economical alternative to the high cost of on sight fabrication. Working closely with our client we match a specific array of standard industry components with our high efficiency heat exchangers to provide the exact energy transfer capacity needed. These skid mounted assemblies are delivered to the job where a minimal amount of piping is required to get you up and running fast.

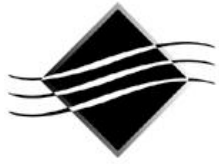
If you are involved in an industrial process application or simply working in the HVAC field let us do all the hard work for you. Send us your project data and we will select all the components, fabricate them into one easy to deal with package, and ship it directly to your plant.

Please request literature on this or on any of the SEC products for more information.

<http://www.secenergy.com/>



## SEC Heat Exchanger Quote Form



**To find out which type of our heat exchangers  
will best suit your requirements  
please complete this form and send it to us**

Name: \_\_\_\_\_ Company: \_\_\_\_\_  
Address: \_\_\_\_\_ City: \_\_\_\_\_  
State: \_\_\_\_\_ Country: \_\_\_\_\_ Zip Code: \_\_\_\_\_  
Phone: \_\_\_\_\_ Fax: \_\_\_\_\_ Email: \_\_\_\_\_  
Project Reference: \_\_\_\_\_ Quantity: \_\_\_\_\_  
Material of Construction: \_\_\_\_\_  
Type Of Heat Exchanger: \_\_\_\_\_ Delivery Required by: \_\_\_\_\_ In Weeks

### **SIDE 1**

### **SIDE 2**

FLUID TYPE: _____	_____
FLOW RATE: _____	_____
INLET TEMPERATURE: _____ C° or F°	_____ C° or F°
OUTLET TEMPERATURE: _____ C° or F°	_____ C° or F°
ALLOWABLE PRESSURE DROP: _____	_____
DESIGN PRESSURE: _____	_____
Optional Data If Known: _____	_____
HEAT TRANSFERRED (CAPACITY): _____	_____
DENSITY @ TEMPERATURE: _____	_____
THERMAL CONDUCTIVITY: _____	_____
SPECIFIC HEAT: _____	_____
VISCOSITY: _____	_____
PHASE CHANGE: _____	_____

**Print and Fax This Form to 1.902.659.2800**



## **SEC** Heat Exchangers

2546 Iona Road  
Belfast, Prince Edward Island  
Canada C0A 1A0  
North America: 1.800.335.6650  
International: 1.902.659.2424  
Fax: 1.902.659.2800  
Email: [info@secheatexchangers.com](mailto:info@secheatexchangers.com)  
[www.heatexchangers.ca](http://www.heatexchangers.ca)  
[www.brazedplate.com](http://www.brazedplate.com)  
[www.secplateandframe.com](http://www.secplateandframe.com)  
[www.secshellandtube.com](http://www.secshellandtube.com)

**To Obtain Your Copy of the SEC Catalogue,  
Installation Manual or Other SEC Publications  
Please Visit our Web Site At:**

**[www.heatexchangers.ca](http://www.heatexchangers.ca)**